

# Safety Bulletin 5 /2023

## Dropped objects



### 4. Never walk under a suspended load

Stay clear of crane operations.

Dear all,

G2 Ocean is committed to provide a safe and healthy work environment for all personnel involved in our operations. The purpose of our Safety Bulletins is to raise awareness of health & safety risks associated with cargo operations.

G2 Ocean works with several hundred stevedore companies worldwide. We believe that by seeking and sharing insights across company and country boundaries, we can prevent future incidents together. Descriptions of incidents will always be fully anonymised.

This edition of our Safety Bulletin is about dropped objects. If you have any feedback, please email us at: [safety@g2ocean.com](mailto:safety@g2ocean.com)

Best regards G2 Ocean Team



## Insight

### Details

Several types of safety barriers are implemented to prevent persons being injured by dropped objects. These include:

**Engineering controls** – the crane and lifting gear is designed to reduce the likelihood and consequence of a technical failure. Regular maintenance and checks are done in accordance with regulations.

**Administrative controls** - signs and procedures informing persons not to walk below suspended loads, and instructions on how to use equipment safely.

**PPE** – the least effective barrier.

It is known within the industry that broken bands keeping bundles of aluminum ingots together, occasionally break during the lift. But over the last months we have seen it happening with a range of different cargoes. It has also occurred when lifting non-cargo items, which often comes in irregular sizes and forms.

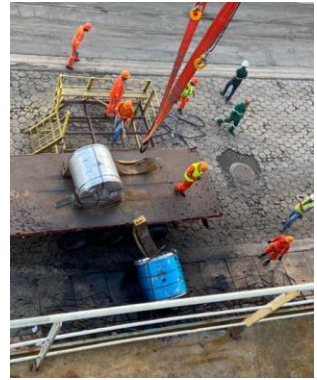


Example of poorly planned lift of non-cargo item: The cage with equipment is bent, and the sling could snap.

All cargo types can fall during a lift. Examples below of dropped steel coil, wood pulp, aluminium ingots, and a mining truck.



Two stevedores were recently observed crawling below a suspended container.



### Intervention

In G2 Ocean we have **Intervention** as one of our desired safety behaviors. We expect this behavior from our own employees, and everyone we work with. It means that we should not look the other way if you observe unsafe behavior, for example walking below a crane lift.



#### Consequences:

- Considering the weight and height of objects handled during cargo operations, a dropped object hitting a person below will likely have fatal consequences.



#### Lesson learned:

- Despite all our efforts to prevent it, we have incidents of dropped objects every year.
- There are a lot of new stevedores in the industry who have never witnessed an object falling during cargo operations. More experienced stevedores have probably seen it a few times during their careers. "Never walk under a suspended load" is one of G2 Ocean's Life-Saving Rules. Remind each other about it and stop everyone who forgets or ignores it.